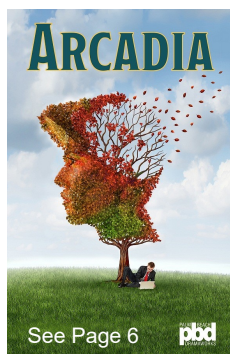


## Inside

Ads .....	5,10-11
Anniversaries .....	8
Birthdays .....	8
Calendar .....	12
Contributions .....	9
Education Update .....	7
Mussar Moment .....	5
President's Message .....	2
Rabbi's Message .....	3



If you have not received  
your Annual Journal, call  
the office at (561) 833-8421.

Visit [www.temple-israel.com](http://www.temple-israel.com)  
for the latest info/updates  
about events and programs.

## Calendar Highlights

*Torah Study every Saturday.*

**March 4** | 11:30 am  
Out of the Box Shabbat

**March 10** | 6:30 pm  
Purim Shabbat  
(wear a costume)

**March 14** | 5:30 pm  
Planning Your Jewish  
Funeral

**March 19** | 2:00 pm  
The Jewish Spirituality  
Challenge

**March 29** | 12:00 pm  
Kraft Cultural Luncheon

## Save these Dates!

**April 1**  
Temple Israel Sisterhood  
and Brotherhood Theatre  
Night

**April 11**  
Temple Israel's Second  
Night Community Seder



invites you to lunch with

**NANCY SPIELBERG**  
Executive Producer of

**"WHO WILL WRITE OUR HISTORY"**

Wednesday, March 29, 2017  
Noon

Temple Israel  
1901 North Flagler Drive  
West Palm Beach, FL 33407  
561.833.8421

RSVP March 20, 2017  
Couvert \$65.00 per person

See more details on page 8

1901 North Flagler Drive  
West Palm Beach, FL 33407

(561) 833-8421  
[www.temple-israel.com](http://www.temple-israel.com)  
Like us on Facebook!

**Rabbi**

Cookie Lea Olshein

**Cantor**

Michael Kruk

**Rabbi Emeritus**

Howard Shapiro, DD

**Administrator**

Jennifer Green Baer

**Director of Youth, Family  
Engagement & Learning**

Iris Koller

**Bookkeeper**

Clover Henry-Gilroy

**Campus Supervisor**

Eamton Mosely

**Accompanist**

David Block

**President**

Michael Jonas

**President-Elect**

Don Carter

**Vice Presidents**

Elaine Feldmesser

Carole Klein

Marty List

Judy Shuster

**Secretary**

Tracy Simkowitz

**Treasurer**

Mark Feldmesser

**Sinshod President**

Ellen Goldenson

**Brotherhood President**

Charlie Eaton

**Board of Directors**

Larry Abramson\*

Rikki Bagatell

Ellen Flaum

Michael Gelfand\*\*

Deborah Hirsch

Barry Horowitz

Sherry Jacobs

Amy Jonas

Harry Kaufman

Roslyn Leopold\*\*

Karen List

Scott Newman

Diana Nussbaum

Fred Weissman\*\*

Pam Wiener

\*Immediate Past President

\*\*Penultimate Past President



# From the President

Michael Jonas

## Tradition & Social Justice

Temple Israel is traditionally an inclusive, respectful and civil community that is a leader in social action in the Palm Beaches. Our Social Action Committee conducts activities to feed the homeless, obtain clothing for those in need and support immigrant resettlement and now it includes a social justice aspect. But, what is social justice?

On December 16, 2016, we, and several delegations from other Reform temples, met in our Media Center with Rabbi Jonah Pesner, the current Director of the Religious Action Center for Reform Judaism (the "RAC"). We learned that the RAC is a not for profit corporation which has, for more than 50 years, been pursuing the completely non-partisan advocacy for public policies that reflect the Jewish values of social justice including economic, racial, ethnic and gender equality and environmental protection. We also learned that advocacy for social justice requires both the knowledge of certain skills and, as a not for profit, the recognition of certain limitations.

The previous RAC director, Rabbi David Saperstein, described Rabbi Pesner's skills as follows:

"Most Jews and most Reform Jews are comparatively liberal," but "What [Pesner is] good at is recognizing that conservatives can be as devoted to social justice as liberals are. He brings a lot of skills to build consensus where it can be done and to defuse incivility where it's not possible."

Politics, advocacy and religion are often a divisive mix. If we are a typical Reform congregation, then, according to the 2013 "PEW" study, 17% of us are Republican or lean Republican and 77% of us are Democrats or lean Democrat. Somewhere in our mix, we include moderates, liberals and fiscal conservatives. Given these sometimes disparate views, we must know our limitations.

We know that as a not for profit corporation, we cannot endorse candidates, politicians or political parties. We also recognize that as an organization, different views within our congregation should be respectfully acknowledged. As Rabbi Pesner once stated: there are dissenting voices in the Reform Jewish community which should be honored and affirmed as authentic Jewish voices. Traditionally, according to the Talmud, minority views are to be recorded alongside the majority view. (Tosefta, Eduyyot 1:4).

Tradition and disagreement - there is an old joke that is still relevant to these concerns. A congregation was split over whether their tradition was to stand or sit during the *Shema*. Each side would yell at the other: Sit Down! Stand up! The dispute could not be resolved. So, the temple's president and rabbi took a delegation from each side to visit the oldest member of the congregation. The man was 100 years old and had been a temple member since his birth. Surely, he could answer the question: What is our tradition?

Each delegation pled their case to the old man, and then the rabbi asked: 'What is our tradition? Should we stand during the *Shema*?' 'No', that is not our tradition said the old man - 'So', the rabbi asked: 'Should we sit during the *Shema*?' 'No', that is not our tradition said the old man - Exasperated, the rabbi asked: 'Well, what is our tradition? We need to know because all we do is argue' ... and the old man replied: 'That, that is our tradition.'

A cute joke but, that is not our tradition. Whether performing social action or advocating for social justice - we are inclusive, respectful and civil. So, when asked: What is our tradition? we can all agree that: This, this is our tradition at Temple Israel.

## New Chesed Committee Can Provide a Helping Hand

Temple Israel has a newly formed *Chesed* (Caring) Committee and we are reaching out to all temple members. If you are sick, injured, need assistance (such as a ride to *Erev Shabbat* services), or if a loved one has passed away, we may be able to help you in your time of need. We are only a phone call away. Please contact the Temple Office at (561) 833-8421 for further details.





# From the Rabbi

Rabbi Cookie Lea Olshein

## ***The Pursuit of Justice ...***

"Justice, justice shall you pursue, that you may live, and inherit the land which Adonai your God gives you." (Deut. 16:20)

These were the words I selected as my verse for the Torah I carried for my ordination ceremony. Each time I read them, I am reminded that every Jew has an obligation to do what they can to create a just world.

In a time when so many in this world feel helpless to have their voices be heard, how can we pursue justice?

You can be someone who pursues justice by participating in one of the many *mitzvah*-based activities we offer at Temple Israel. For example, recently at services, I spoke about the power of a single story to change a legislator's mind and provided postcards (with stamps) to tell our stories to our Senators. But this was not a one-time offer ... you are welcome to stop by the Office anytime to pick up a pre-addressed stamped postcard to the Senator of your choice so you can participate in your democracy.

If you prefer something more hands-on and immediate, we can also help you create a more just world by ensuring that no one goes hungry, either by donating your "Buy-One-Get-One's" (BOGOs) or by picking up an extra for a family in need. Your donation allows me to confidentially help families in need from Temple Israel, as well as helping families in the community through our participation in the West Palm Beach Food Pantry.

Or, you can donate a couple of hours of your time on the 1st and 3rd Friday mornings of each month to see where this food goes ... it is a truly humbling experience to see how appreciative these families are, and participate in the *mitzvah* of feeding the hungry in a very immediate and hands-on way. Perhaps you would like to become involved in our "Refugee Resettlement Program"? It only takes a small amount of time to make a meaningful difference in our Syrian Christian family's lives.

Lastly, if none of these ideas appeal to you, please consider joining us for our next "Courageous Conversation," which will be held on Friday, March 24th, in conjunction with services beginning at 630pm. With your RSVP before March 21st, we will provide a complimentary dinner, and a stimulating evening on the topic of "Gun Violence Prevention." We hope that you will consider inviting your friends, Jewish or not, for an evening of learning and conversation as we struggle with important issues facing our community. (Also, please mark your calendars for Friday, May 12th, when we discuss "Race Relations.")

Temple Israel has always been known for its rich history of social action and, as a Rabbi, I hope you are inspired to embrace at least one issue that you can "make your own." If you would like, I welcome the opportunity to sit down with you if you would like to process through the best ways you can make a difference, whether it be through making a donation or doing more hands-on work ... feel free to think of me as your own personal "*Mitzvah Concierge*"!

Each month, I end my message with a short prayer ... may each of us feel empowered to make a difference in our world, either on a large or small scale, and may we find the strength within to make it so.  
*B'shir v'shalom* (in song and peace),

-Rabbi Cookie Lea Olshein.

## **Our Next "Out of the Box Shabbat" Morning Worship is on March 4th!**

Step "out of your box" on Saturday, March 4th, at 11:00am (right after Torah study from 9:30-10:30-ish am) and join us for our monthly Shabbat MORNING worship experience we are calling "Out of the Box Shabbat"!

This informal, one hour-ish, Shabbat morning exploration of the prayers and meaning of Shabbat with Guest Musician Carol Garrett, will challenge you through its music, its delivery, and its message ... so have some faith in trying something new and join us for TI's Shabbat EXPERIMENT and, yes, there will even be a light Kiddush lunch following!

Come comfortably dressed with an open mind ... open to all ... no RSVP necessary.



*A Series of Discussions on Important Topics*



**MARCH 24**  
**MAY 12**

6:30 pm | Temple Israel

# Temple Israel's New Greeting Corps

Have you been to Temple lately? If so, then you've seen the new nametags beautifully designed by Elaine Feldmesser. With the help of Michele Seltzer, Sheila Lutin, Esther Perman, Ellen Goldenson, Elaine Feldmesser and Amy Jonas volunteering at the temple - every members has a new name tag and our visitor tags were updated in time for the February 10<sup>th</sup> Shabbat and Rabbi Shapiro's "NPIWYTM" – Unorthodox event. The rollout of these nametags is in conjunction with a new branch of the membership committee we're calling the **Greeting Corps**.

Members of our Greeting Corp will be on hand every Friday night to help assist congregants and visitors alike with their questions. You'll be able to easily spot our greeters by the colorful Greeting Corps button or greeter ribbon that they will be wearing.

The goal of this welcoming group is to enhance the Friday night experience for everyone.

The Greeting Corps will help us identify returning guests to Temple Israel and will encourage visitors to come again.

Along with our "blue cup initiative" at the Oneg, guests will now have permanent visitor name tags. We have also implemented a new procedure that has 'first-time visitors' completing a Visitor Intake Form - which once completed a visitor will receive a "welcome gift" which contains information about the Temple and the exciting programs and happenings at TI. The Temple office and Greeting Corps will keep track of our visitors, which in turn will help us better engage the community and grow our TI membership.

The first time we used these forms was February 10<sup>th</sup>, and that evening we collected over fifty. A big thanks goes to the greeters that night: Debbie Hirsch, Hugo Ottolenghi, Jeffrey Gingold, Tracy & Mark Simkowitz, Lori Ackerman, Beryle Goverman, Elaine & Mark Feldmesser, Valerie & Charlie Eaton, Nancy & Barry Horowitz, and Linda & Howard Solomon.

A special thank you to Maggie and Harry Kaufman for helping to underwrite the cost of our new tags.

Please mingle with our guests and share with them the fellowship and friendship that makes Temple Israel special. Please consider becoming part of the **Greeting Corps!** It's a great way to meet new people and get to know your fellow congregants. Call or email Co-Chairs Mark Simkowitz (561) 762-7947; [mgoose54@aol.com](mailto:mgoose54@aol.com) or Lori Ackerman (561) 371-3955; [LKAck@aol.com](mailto:LKAck@aol.com) for more information.



Help us welcome more folks into our Temple Israel Family!

## List of Temple Israel's Special Funds

Call the Temple office at (561) 833-8421 for more information.

- ☐ Beautification Fund
- ☐ Continuing Jewish Education for Adults Fund
- ☐ Jewish Education for Youth Fund
- ☐ Judaica Fund
- ☐ Leadership Development Fund
- ☐ Library/Media Center Fund
- ☐ Mitzvah Fund
- ☐ Prayer Book/Torah Commentary Fund
- ☐ Programming Fund
- ☐ Rabbi Emeritus Continuing Education Fund
- ☐ Rabbi Howard Shapiro Youth Fund
- ☐ Rabbi's Discretionary Fund
- ☐ Social Action Fund
- ☐ Social Hall/Kitchen Fund
- ☐ Special Needs Fund
- ☐ Harvey Goldberg Technology/Innovation Fund
- ☐ Vineberg Floral Fund
- ☐ Warren Canfield Music Fund

## Purim is Coming! Purim is Coming!

Where is your crown? Where's your three-cornered hat? Pull out your costumes as Temple Israel celebrates **PURIM on Friday, March 10.**

"Proneg" at 6:00pm ... Services at 6:30pm ... *Oneg Shabbat* dessert reception following. There might even be a PRIZE for best Adult's and Kid's Costumes you'll have to come to find out!) As always, open to all, so invite your friends!

## Help our office help you!

Our members make generous donations to Temple Israel and often ask the Temple to allocate them to two or more purposes. Because not all of our accounts are held at the same bank, it would be a great help if donations going to different banks were written on different checks (this does not pertain to credit card donations).

Payments for the following can all be on one check and will be allocated according to your instructions:

General Donations	Fundraising Events	High Holy Day Appeal
Yarzheits	Koleynu Ads	Class Payments
Annual Commitments	Annual Journal Ads	Religious School
Brotherhood Dues	Sisterhood Dues	

Payments made to any "fund" (see list above), can be together on one check and will be allocated according to your instructions. Contact the Temple office if you have any questions.





# The Mussar Moment

Barry S. Horowitz, MD

I am often asked how I became interested in *Mussar*. As a life-long Reform Jew, I have always enjoyed the liturgy of services and have felt a strong connection to Jewish culture. Yet, I had not felt a true spiritual bond to my religion. Indeed, during my junior year abroad in college, I decided to study at Hebrew University in Jerusalem. Along with my secular studies there, I took it upon myself to learn regularly at a local Yeshiva and with a *Kabbalist*. Despite this, I did not develop a spiritual practice rooted in Judaism.

About 12 years ago, I began a yoga and meditation practice, which I continue today. I studied with a teacher who taught the movement of the practice in a way that was rooted spiritually. This brought me great inner understanding and insight. Yet, I still yearned for a spiritual connection to Judaism.

Then Rabbi Shapiro taught an introduction to *Mussar* course using Alan Morinis' book *Everyday Holiness* as a text. I had finally found the connection that had been missing. The teachings and practices spoke to me viscerally. Who knew that the meditation I had been doing was part of the *Mussar* tradition, along with chanting, visualizations and contemplations.

I read Alan's book *Climbing Jacob's Ladder*, which tells of his journey to *Mussar*. I then decided to embark on a year-long *Chesbon Ha'Nefesh* or accounting of the soul, where I studied 13 different *Middot* or soul traits relevant to me, each weekly for four cycles. At the same time, Rabbi Shapiro began teaching *Mussar* and we were off and running. The following year, I took the *Mussar* Institute's *Manchim* course on how to facilitate *Mussar* programs.

*Mussar* is all about relationships, your relationship with yourself, your relationship with others and your relationship with God. Through studying and practicing, your *Middot* become more balanced, allowing the light of your *Neshama*, your soul, to shine more brightly into the world. You become more grateful for what you have, more patient and are more able to rest in the moment, trusting that you cannot control everything in your life.

If you have never been exposed to *Mussar* or if you have and would like to be re-invigorated, please join Rabbi Shapiro and I for The Jewish Spirituality Challenge: What Do You Need? This will be held on Sunday, March 19<sup>th</sup> from 2:00-4:00 p.m. Alan Morinis will be teaching during a live international webcast and then we will learn and study together. Please see the advertisement on this page for more details on how to register.



**The Jewish Spirituality Challenge:  
What Do You Need?**

**Sunday, March 19, 2017**

2:00 PM EDT / 1:00 PM CDT  
12:00 PM MDT / 11:00 AM PDT  
3:00 PM Sao Paulo, Brazil  
7:00 PM The Netherlands / 8:00 PM Israel

**Temple Israel  
1901 N. Flagler Drive | West Palm Beach**

**Contact: Rabbi Howard Shapiro & Dr. Barry Horowitz  
561-833-8421**

**What qualities or goals would you like to  
bring into your spiritual life?**

What role does your Jewish community  
play in helping you develop your  
spiritual life?

Please join us for  
The Mussar Institute's  
International Day of Study

Alan Morinis will welcome the international community  
and give a *Mussar* teaching via a live webcast.

The talk will be followed by small group text study and a discussion with a local *Mussar* facilitator.  
The webcast will reconvene with communities identifying their top challenges.

To register for this worldwide event by March 10, go to  
<http://mussarinstitute.org/jewish-spirituality-challenge>

Cost for the event is \$18; light refreshments will be served.  
For questions email [JSC@mussarinstitute.org](mailto:JSC@mussarinstitute.org).

AWARENESS • WISDOM • TRANSFORMATION

## Lawrence M. Abramson Attorney at Law

(561) 965-3411

Fax (561) 965-0059

E-mail: [LawrenceAbramson@aol.com](mailto:LawrenceAbramson@aol.com)

1860 Forest Hill Boulevard

Suite 200

West Palm Beach, FL 33406

## JOIN TEMPLE ISRAEL SISTERHOOD AND BROTHERHOOD FOR A NIGHT AT DRAMAWORKS AND GOURMET DINNER AT JARDIN

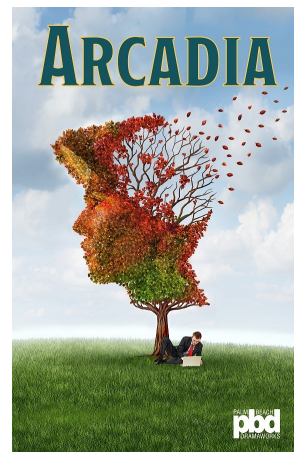
Join Temple Israel Sisterhood and Brotherhood at another exciting Theater Night and Dinner on April 1, 2017 for the Dramaworks production of "Arcadia", a 1933 play by Tom Stoppard about the relationship between past and present, order and disorder, certainty and uncertainty. Theater tickets are at the reduced rate of \$56 each.

As in past years, those attending are invited to meet for dinner at 5:00 p.m. at Jardin, 330 Clematis Street, West Palm Beach, and then walk to the theater less than two blocks away. Co-chairs for the event are Sisterhood members Eunice Baros and Sherry Jacobs, who is a member of the Board of Directors at Dramaworks, and Jim Baros, representing Brotherhood. Dinner reservations are separate from the theater tickets. Dinner will be a three-course meal for \$40 per person.

Please make all checks payable to Temple Israel Sisterhood and reserve by March 15.

Temple Israel season ticket holders at Dramaworks may transfer their regular date for this April 1st performance at no charge.

For more information, contact Eunice Baros at [eunicebaroslaw@gmail.com](mailto:eunicebaroslaw@gmail.com) or the TI office at (561) 833-8421.



### Six Palm Beach Area Synagogues

Will Join Together For A

### Unity for Israel Dessert Reception

New Synagogue of Palm Beach  
Palm Beach Synagogue  
Temple Beth El  
Temple Beth Kodesh  
Temple Beth Tikvah  
Temple Israel of West Palm Beach

Honoring

**Ruth Abramson**

Temple Israel of West Palm Beach

Guest Speaker

**Ambassador Ido Aharoni**

Israel's Former Consul General in New York

**Wednesday, March 8, 2017 · 7:00 pm**

For event information, contact:

[palmbeach@israelbonds.com](mailto:palmbeach@israelbonds.com)  
561.939.1360

Temple Beth El

2815 N. Flagler Drive  
West Palm Beach, FL 33407

Complimentary Admission · Dietary Laws Observed



INVEST IN ISRAEL BONDS · [ISRAELBONDS.COM](http://ISRAELBONDS.COM)  
Development Corporation for Israel. This is not an offering, which can be made only by prospectus. Read the prospectus carefully before investing to fully evaluate the risks associated with investing in Israel bonds. Member FINRA, Israel Bonds Exchange 2 (IBEX) (israelbonds.com, ibexphoto.com, james.gardner)

[www.MentalHealthFirstAid.org](http://www.MentalHealthFirstAid.org)



### A Conversation Can Change a Life!

Someone you know could be experiencing a mental illness or crisis. You can help them.

You are more likely to encounter someone — friend, family member, coworker, neighbor, or member of the community — in an emotional or mental crisis than someone having a heart attack. Mental Health First Aid teaches a 5-step action plan to offer initial help to people with the signs and symptoms of a mental illness or in a crisis, and connect them with the appropriate professional, peer, social, or self-help care. Anyone can take the 8-hour Mental Health First Aid course — first responders, students, teachers, leaders of Faith communities, human resources professionals, and caring citizens.

**Sometimes, first aid is **YOU!****

#### MENTAL HEALTH FIRST AID TRAINING

**Dates: March 5 and 19, 2017**  
(must attend both sessions for certification)

**Time: 1:00-5:00pm**

**Location: Temple Israel of West Palm Beach**  
1901 N. Flagler Drive 33407  
(parking and entrance are on Pine Street)

**FREE ... but MUST Register by March 1, 2017,**  
**by calling Temple Israel at (561) 833-8421.**

\* Please notify us with any accessibility needs.

Facilitated by:  
Cindy Wides, Palm Beach County Mental Health First Aid Coalition  
Director, Alpert Jewish Family & Children's Service



#### ALGEE, the Mental Health First Aid Action Plan

Assess for risk of suicide or harm  
Listen nonjudgmentally  
Give reassurance and information  
Encourage appropriate professional help  
Encourage self-help and other support strategies



Sponsored by:

Ferd & Gladys Alpert  
Jewish Family & Children's Service

Palm Beach County MHFA coalition sponsored by Palm  
Healthcare Foundation, Herbert Bearman Foundation, and  
Boca Raton's Promise

For more information on MHFA, visit the coalition website,  
hosted by AJFCS at [www.jfcsonline.com/mhfa](http://www.jfcsonline.com/mhfa)

Mental Health First Aid USA is coordinated by the National Council for  
Community Behavioral Healthcare, the Maryland Department of Health  
and Mental Hygiene, and the Missouri Department of Mental Health.

## "Today's Important Jewish Artists"

Please join popular teacher Mark Cohen as he takes us through an in-depth study of nine Jewish artists you've never heard of who are influencing art world-wide. Mark is a life-long student of twentieth century American art and an award-winning advertising and marketing practitioner. Mark divides his time between commerce, painting and teaching, both at the Armory Arts Center and at Palm Beach State College.

Classes will be held on 3 consecutive Wednesday nights beginning on March 15th from 6:30-8:00pm. Please RSVP to the Office by calling (561) 833-8421 so that we know to expect you. Free and open to the entire community.





## From the Educator

Iris Koller | Director of Youth, Family Engagement & Learning

### ***Purim* – One Day; Four Mitzvot; Much Joy!**

Our sages taught long ago that “When (the month of) *Adar* enters, joy increases.” Perhaps for some, this was because they saw signs of spring, but truly the saying comes in connection to the joyous and fun celebration of *Purim* which occurs mid-month. This year, *Adar* began on February 27<sup>th</sup> and *Purim* begins on Saturday evening, March 11<sup>th</sup>.

There are four *mitzvot* specifically connected to *Purim* and on Sunday, March 12<sup>th</sup>, the students (and many parents) of our Religious School will have the chance to observe them all.

We will hear the *Megillah*, as our classes share the work of retelling the story

We will give *Mishloach Manot* – gifts of sweet food to friends – as we make *Purim* treat baskets for each other

We will ensure those in need are helped as well, fulfilling the *mitzvah* of *Matanot La'evyonim* by bagging rice

And, we will enjoy a *Seudah* - a festive lunch together.

As we do this, we will live one other value we are taught at *Purim* – just as Queen Esther spoke up and ensured that the Jewish people would not be marginalized or feared in ancient Shushan, we now need to ensure others are not marginalized. So, on March 12<sup>th</sup> we will welcome the Syrian refugee family that our congregation is sponsoring to join us, working to build friendships and connections.

Our students learn best through experiences where they can live their values and experience Jewish life in real time. Our *Purim* celebration will offer the best of both. You are welcome to join us – just please let me know if you'd like to participate by emailing me at [iris@temple-israel.com](mailto:iris@temple-israel.com)



Some of our Kindergarten and first graders reminding other students to bring food for those in need



Our 2nd & 3rd graders check out the growth of our Etrog tree



4th - 6th graders - with supportive parent volunteers - sponsored a bake sale as part of their ongoing effort to raise funds for the Kids Cancer Foundation

## March Birthdays



2	Siena Davis	15	Evan List
	Karen List	16	Jane Warshaw
	Dania Schwartz	18	Nancy Schwartz
3	Fredric Fine	19	Rikki Bagatell
4	Chloe Schwartz		Gerard Belilty
7	Matthew Goldberger		Sherri Gilbert
	Fruema Klorfein	20	Alison Goldberg
8	Edward Elson		Ma'ayan Eckstein
	Bennett Harris	22	Jonathan Horowitz
9	Jeffrey Hirsch	23	Jules Fox
	Joi Lynn Young	24	Matthew Sax
10	Deborah Hirsch		Alexandra Skaletsky
11	Larry Abramson		Burton Stern
	Barbara Thrasher	25	Brian Haft
	Elias Torres-Nussbaum	26	Brian Haft
12	Sylvia Schupler		Howard Berman
13	Molly Botnick		Samantha Feuer
		27	Caren Zisson
		29	Marsha Fishbane
		30	Cherri Alexander



## Wedding Anniversaries

3	Stefanie & Robert Raifman
7	Melissa & Blake Matthews
9	Wendy & Derek Arron
11	Doris & Norman Berman
20	Karen & Martin List
21	Phyllis & Herbert Siegel
30	Ellen & Robert Wacks



## Mazel Tov

Ann Kritzer on the birth of her grand-niece, Karlie Ella Bergman

Congratulations to Richard Kleid. Richard has served for two terms as President Pro Tem and is currently serving his third term as President of the Palm Beach Town Council.

## Who Will Write Our History



*This important film brings to life, the stories written and buried in an archive later found in the Warsaw Ghetto. Discover the life of 1940s Polish Jews in their own words.*

## NANCY SPIELBERG

"The documentary filmmaking world is pure. I choose projects that can help in some way or that have a story that really moves me."

- Nancy Spielberg



Producer Nancy Spielberg grew up immersed in filmmaking, working on her brother's early films as cast and crew. She attended Arizona State University and UCLA and, after moving to New York in 1978, studied film at Sarah Lawrence College and the New School in New York. An accomplished businesswoman, fundraiser woman, and philanthropist, she has in recent years turned her energy and talents to producing documentary films. She served as

consultant on the Oscar-winning documentary, Chernobyl Heart, and is executive producer of Elusive Justice: the Search for Nazi War Criminals, and Mimi and Dona, which aired nationally on PBS. Ms. Spielberg also produced a project for the Israeli government: Celebrities Salute Israel's 60th, which was featured in Times Square on the NASDAQ screens for one month.

Most recently, Ms. Spielberg produced Above and Beyond, winner of the audience award at more than twenty film festivals. She is executive producer of Who Will Write Our History, which tells the story of Warsaw Ghetto Jews who wrote and buried their documents and stories into Polish soil before they were killed by the Nazis, and of On The Map, a documentary by filmmaker Dani Menkin, currently in post-production. Nancy Spielberg is founder and co-founder of several charities including "A Bid for Charity," "Children of Chernobyl," "Project Sunshine" and the American branch of The Jerusalem Academy of Music and Dance.

## The Best Gift You Can Give Your Family is Pre-Planning Your Jewish Funeral

On Tuesday, March 14th at 5:30 p.m. get all of your questions answered as Rabbi Olshein and Temple member and funeral director, Brett Golov, discuss Jewish traditions related to death and dying and the many options for planning your traditional or more contemporary Jewish funeral.

Complimentary light dinner and free planning guide for those who RSVP before March 10th. Please call the Office at (561) 833-8421 to RSVP. Everyone needs this important information. Open to the entire community, so please invite your friends.

**SAVE the DATE!**

**Temple Israel's  
Second Night Community Seder**

Enjoy a meaningful Passover Seder  
with your Temple Israel family & friends

**Tuesday, April 11, 2017.**

**Join Rabbi Cookie Lea Olshein and  
Cantor Michael Kruk**



# Contributions

*We appreciate the thoughtfulness of those who support*

## Family Life Education Fund

In memory of :

Vera Rosen, Laurie's mother  
from Laurie Halpern

## General Donation

In memory of :

Rabbi Zion  
from Don Carter

## Jewish Education for Youth Fund

In memory of :

Barbara Greenberg, Ed's sister  
from Deanna & Edward Roos  
Deborah Webber, Ed's niece  
from Deanna & Edward Roos  
Barbara Greenberg  
from Ellie Shiffman & Marty Shiffman, z"l  
Barbara Greenberg  
from Barbara Thrasher

## Prayer Book Fund

In memory of:

Donald Berger  
from Lora Baum

## Vineberg Floral Fund

In memory of:

Stephen Paskal, Judy's brother  
from Judy, Jen & Alan Shuster  
Eugene Jonas, Michael's father & Susanne's husband  
Eugene Rosenfeld, Amy's & Linda's father  
Jacob Spector, Amy's & Linda's grandfather  
from Jeffrey & Linda Hirsch,  
Amy and Michael Jonas,  
Susanne Jonas-Levy & Family  
Anne T. Goodman  
from Murray Goodman  
Leon Raphael, Sherry's father  
from Sherry & Stephen Jacobs  
Marshall Levy, Susanne's husband  
Lillian Rosenblum, Susanne's mother  
from Susanne Jonas-Levy  
Vera Rosen, Laurie's mother  
from Laurie Halpern

## Rabbis' Discretionary Fund

Patricia Matson



## Warren Canfeld Choir/Music Fund

In memory of:

Leah Rubin & Martha Kadish, Lisa's grandmothers  
from Lisa Caplan

## Social Action Fund

In honor of:

Refugee Family  
from Kent Fescenmeyer

## Yahrzeit Donation

In memory of:

Jesse Fishbane  
from Stanley Fishbane  
Emanuel Steinberg, Barry's grandfather  
from Barry & Nancy Horowitz  
Mary Aronberg  
from Larry Aronberg  
Arthur Koll  
from Zelda & Allen Mason  
Morris Kraft, Zelda's father  
from Zelda & Allen Mason  
Mary Lockshin  
from Shirley & James Lockshin  
Badana & Herman Lasnick  
from Ann & Julius Lasnick  
Emanuel Stein  
from Madeline & Neil Roberts  
Lillian Gold, Lewis's mother  
from Lewis Gold  
May Blank  
from Bob Blank  
Samuel Zahn, Millicent's father-in-law  
Leonard Zahn, Millicent's husband  
Mathew Goldman, Millicent's father  
from Millicent Rudnick  
Philip Livingstone, Trudy's father-in-law  
Joseph Zweig, Trudy's father  
from Trudy Livingstone  
Paul Miller  
from Marlene Ganz-Bogard  
Burt Salkin  
from Ruth Salkin  
Bobby Kaplan, Susan's mother  
Burt Bauchner, Susan's husband  
from Susan Bauchner  
Ida Shapiro  
from Rabbi Howard & Eileen Shapiro



To help with the rising costs of finance charges on credit card payments, we are now requiring a 3% convenience fee on all credit card transactions.



**Thank you to our advertisers and Koleynu Keepers!**  
**Call the Temple office at (561) 833-8421 to reserve your space.**

## **Gelfand & Arpe, P.A.**

**Michael J. Gelfand**  
 Attorney

1555 Palm Beach Lakes Blvd.  
 Suite 1220  
 West Palm Beach, FL 33401-2329  
 Tel: 561.655.6224  
 E-mail: MJGelfand@gelfandarpe.com



### **Implant, Cosmetic, and General Dentistry**

The Palm Beach Towers | 44 Cocconut Row, Palm Beach  
**(561) 832-4675**  
 drjosephs@palmbeachdentist.com

## **SHUSTER EYE**

**ALAN R. SHUSTER, M.D., F.A.C.S.**

Diplomate, American Board of Ophthalmology  
 Diseases and Surgery of the Eye

2220 SE Ocean Blvd. - Suite 101 - Stuart, Florida 34996

(772) 210-7070 (561) 425-7070  
 Fax (772) 210-9080



## **Palm Beach Paperworks**

Invitations • Stationery  
 Announcements • Holiday Cards

**Nancy F. Horowitz**

129 Thornton Dr. - Palm Beach Gardens, FL 33418  
 Tel/Fax 561-622-1522

## **Joanne Green, DDS**

EXPERIENCE DENTISTRY WITH A WOMAN'S TOUCH

*Cosmetic and Comprehensive Restorative Dentistry*

10887 N. Military Trail, Suite 6 • Palm Beach Gardens, FL 33410  
 Phone: 561.622.2815 • Fax: 561.622.3231  
 www.joannegreendds.com • documents@joannegreendds.com



## **THE LIST COMPANIES**

*A diversified real estate organization*

**LISA R. CAPLAN**  
 Realtor Associate

**CELL 561-704-2789 • lisarubincaplan@aol.com**  
 340 ROYAL POINCIANA WAY • #317 PMB 378 • PALM BEACH, FLORIDA 33480  
 OFFICE 561-655-7150 • FAX 561-892-0555

## **BLACKMAN®**

Fine Plumbing Products Since 1921  
*Faucets. Fixtures, Lighting, Tile & Stone*

**Marcy Goldblatt-Greiter**

Showroom Sales

820 South Dixie Highway, West Palm Beach  
 (561) 650-7425 ext. 6503  
 MGoldblatt-greiter@blackman.com

## **Agora Mediterranean Kitchen**

Voted #2 in the World by tripadvisor  
 (561) 651-7474

2505 N. Dixie Highway, West Palm Beach, Florida 33407  
 http://agorakitchenwpb.com



tripadvisor®



**Agora Mediterranean Kitchen**

#2 of 443 in World

214 reviews

\$\$, Middle Eastern, Mediterranean, European,  
 Turkish, Greek



# YOUR NEXT CHAPTER STARTS HERE...



***Now Leasing!***

Stephen and Petra Levin  
**Tower**  
at MorseLife



## **The Ultimate in Senior Living**

- Luxury Independent Living Apartments
- Resort Style Services & Amenities Included
- Kosher & Non-Kosher Dining Venues
- Now Offering Local Private Golf Memberships!
- Rental – no upfront entrance fees

**561.687.5755**

Marilyn & Stanley M. Katz Seniors Campus  
4850 Ryna Greenbaum Drive, West Palm Beach, Florida 33417 | [morselife.org/thetower](https://morselife.org/thetower)



We are pledged to the letter and spirit of U.S. policy for the achievement of equal housing opportunity throughout the Nation. We encourage and support an affirmative advertising and marketing program in which there are no barriers to obtaining housing because of race, color, religion, sex, handicap, familial status, or national origin.





1901 North Flagler Drive  
West Palm Beach, Florida 33407

NON-PROFIT ORG  
U.S. POSTAGE  
**PAID**  
West Palm Bch, FL  
Permit No. 92

OR CURRENT RESIDENT

# March 2017

Visit [www.Temple-Israel.com](http://www.Temple-Israel.com) for more information about these events and programs and for the latest calendar updates.

Sunday	Monday	Tuesday	Wednesday	Thursday	Friday	Saturday
			1	2	3 <b>Late Erev Shabbat</b> 7:00 pm - Proneg 7:30 pm - Service	4 <b>Torah Study</b> 9:30-10:30 am <b>Out of the Box Shabbat</b> 11:30 am
5	6	7	8	9	10 <b>Purim Shabbat (wear a costume)</b> 6:00 pm - Proneg 6:30 pm - Service	11 <b>Torah Study</b> 9:30-10:30 am
12	13	14 <b>Planning Your Jewish Funeral</b> 5:30 pm	15 <b>Art Course by Mark Cohen</b> 6:30 pm	16	17 <b>Erev Shabbat</b> 6:00 pm - Proneg 6:30 pm - Service	18 <b>Torah Study</b> 9:30-10:30 am
19 <b>The Jewish Spirituality Challenge</b> 2:00 pm	20	21 <b>Board Meeting</b> 7:00 pm	22 <b>Art Course by Mark Cohen</b> 6:30 pm	23	24 <b>Erev Shabbat</b> 6:00 pm - Proneg 6:30 pm - Service followed with <i><b>Courageous Conversations #3</b></i>	25 <b>Torah Study</b> 9:30-10:30 am
26	27	28	29 <b>Kraft Cultural Luncheon</b> 12:00 pm <b>Art Course by Mark Cohen</b> 6:30 pm	30	31 <b>Erev Shabbat</b> 6:00 pm - Proneg 6:30 pm - Service	