



Inside

Ad Journal Info	4
Ads	8-11
Anniversaries	12
Birthdays	12
Cemetery Plot Offer	7
Donations	5
Member Spotlight	4
Photo Album	6
President's Circle Update	7
President's Message	2
Rabbi's Message	3
Social Action Report	7
TI Reads (Book Club)	2
Tree of Life Info	7

Visit www.temple-israel.com for the latest info/updates about events and programs.

Torah Study every Saturday at 9:30 – 10:30 am.

June Calendar

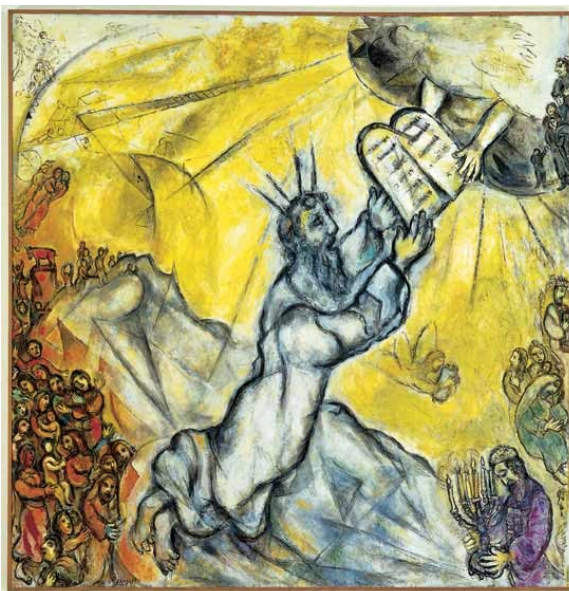
- June 3** | 7:30 pm
Shabbat Services
- June 9** | 6:00 pm
Annual Brotherhood Dinner
- June 10** | 6:30 pm
Volunteer Shabbat
- June 11** | 6:00 pm
Erev Shavuot Dairy Dinner
- June 11** | 7:00 pm
Erev Shavuot Services
- June 16** | 7:00 pm
TI Reads
- June 17** | 6:30 pm
Shabbat Services
- June 21** | 7:00 pm
Board of Directors Meeting
- June 24** | 6:30 pm
Shabbat Services

July Calendar

- July 1** | 6:00 pm
Rabbi's Birthday Dinner
- July 1** | 6:30 pm
Shabbat Services
- July 8** | 6:30 pm
Shabbat Services
- July 9** | 7:00 pm
Summer Film Series
- July 15** | 6:30 pm
Shabbat Services
- July 16** | 11:00 am
Special Shabbat Learning
- July 22** | 6:30 pm
Shabbat Services
- July 23** | 7:00 pm
Summer Film Series
- July 29** | 6:30 pm
Shabbat Services

Volunteer Appreciation Shabbat

Celebrate with your Temple Israel family on Friday, June 10 as we honor those who volunteer their time, energy, and passion to make Temple Israel amazing!



Join us for Erev Shavuot Services!

Start your Shavuot celebration with a complimentary Dairy Dinner on Saturday, June 11 at 6:00 pm, followed by worship service at 7:00 pm. Then join us for a dessert reception and Havdallah after the service.

RSVP by Wednesday, June 8. Call the Temple office at (561) 833-8421 for more information and to RSVP.

Brotherhood Annual Steak Dinner

Brotherhood members will enjoy an evening filled with great food and fellowship on June 9 at 6:00 pm. The dinner is free for all paid up Brotherhood members.

New officers will be elected for the Brotherhood Board. Steak and a non-meat dish will be served along with fixings. A huge thank you to Brother Jeff Gingold for preparing our menu for the evening!



The Rabbi Invites You to a Pizza Dinner...



Rabbi Olshein invites you to a special Pizza Dinner *before* services on Friday, July 1, in honor of her upcoming birthday! *You must RSVP to the office by June 29 if you plan to attend.*

Dinner will be held upstairs at 6:00 pm in the Cyber Cafe, followed by Shabbat services at 6:30 pm in the Media Center overlooking the Intracoastal Waterway. An Oneg Shabbat dessert reception will follow services.

For planning purposes, please call (561) 833-8421 by June 29 to let us know if you will be attending. We look forward to celebrating Shabbat (and the Rabbi's birthday) with you!

Note: Summer Shabbat Services will be held in the Media Center starting June 17.

1901 North Flagler Drive
West Palm Beach, FL 33407

(561) 833-8421
www.temple-israel.com
Like us on Facebook!

Rabbi

Cookie Lea Olshein

Cantor

Michael Kruk

Rabbi Emeritus

Howard Shapiro, DD

Administrator

Jennifer Green Baer

Religious School Director

Iris Koller

Bookkeeper

Clover Henry-Gilroy

Maintenance Technician

Earnston Mosely

Administrative Assistant

Tracy Spence

Youth Group Advisor

Lily Tysinger

Accompanist

David Block

President

Michael Jonas

Vice Presidents

Don Carter
Elaine Feldmesser
Marty List
David Sax
Judy Shuster

Secretary

Tracy Simkowitz

Treasurer

Mark Feldmesser

Board of Directors

Rikki Bagatell
Eunice Baros
Ellen Flaum
Michael Gelfand
Deborah Hirsch
Barry Horowitz
Sherry Jacobs
Amy Jonas
Harry Kaufman
Carole Klein
Roslyn Leopold
Cynnie S. List
Karen List
Scott Newman
Diana Nussbaum
Pam Wiener

Larry Abramson

Immediate Past President

Fred Weissman

Penultimate Past President

Sisterhood President

Lori Ackerman

Brotherhood co-Presidents

Charlie Eaton
Jim Eisenberg



From the President

Michael Jonas

"The Season," Bob Dylan, and Pete Seeger

Originally, "The Season" in the Palm Beaches was a ten-week period from mid-December until February 23, the day after Washington's birthday. Due to increasing development of the area, "The Season" evolved during the past 40 years or so to beginning sometime in November and ending sometime towards the end of April. For many years after "The Season" ended, temple services were conducted by lay leadership and were known for limited attendance.

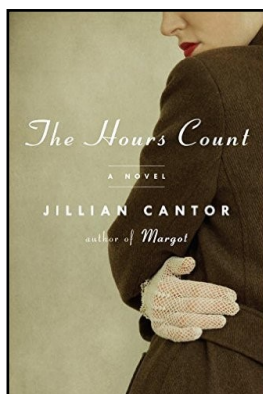
Once more, "the times," as Bob Dylan wrote, are "a-changing." Summer services have changed and attendance has been significant recently. Part of this change is due to fact that despite many of our congregants traveling during the summer, they are generally not "snowbirds." They are people who call the Palm Beaches their home and are seeking a welcoming atmosphere, content and meaning to enrich their lives, perhaps an opportunity to perform an act of tzedakah, and to end their week by enjoying a "good spread" of food at our Pronegs and Onegs with friends. The other part of this change is that most of the summer services for the past few years have been led by Rabbi Olshein.

On Friday night, May 6, a welcoming atmosphere, content, meaning, and a "good spread" were enjoyed by nearly 150 congregants and visitors. Services were conducted by Rabbi Olshein and enriched by our Cantor's violin playing. During that service, a call for Social Action resulted in acts of tzedakah.

As described in our correspondence and literature, Pam Wiener, through the Social Action Committee, is spearheading our synagogue's drive to provide basic furniture and furnishings to Middle Eastern and African refugees who have come to our community. Although Pam had previously received commitments for several items, more furniture was urgently needed. To assist in this effort, we made an appeal from the bimah. I am pleased to report that our congregants responded and much of the additional furniture was received that weekend. The services, violin playing, and call for Social Action would have made for a full evening, but we had much more to offer.

The evening was highlighted by Dr. Robert Watson, who is a noted history professor and lecturer. Dr. Watson spoke at our Proneg in our David & Pauline Carter Ballroom about what he described as the last, and until recently, unknown horrific acts at the end of World War II. His lecture was fascinating because light was shed not only on a final Nazi atrocity, but also on the contributory mistakes made by allied forces. Thank you to Lora Baum for bringing Dr. Watson to our synagogue and for underwriting his speaking, and thank you to Judy Goldblatt for choosing and underwriting the special catering of our Proneg and Oneg. Thank you to both Lora and Judy also for the time they spent and their attention to details to help make the evening memorable.

Although we may still have "The Season" in the Palm Beaches, it is not the only "season" at our synagogue. There is a season for everything at Temple Israel. As described in Ecclesiastes, written by Pete Seeger and made famous by The Byrds - Turn, Turn, Turn - To Everything There Is a Season. Turn to Temple Israel to enrich your life during these spring and summer seasons. Turn to Temple Israel all year round for a welcoming atmosphere, content, meaning, opportunities to perform tzedakah, and even a "good spread."



TI Reads

The next TI Reads is Thursday, June 16, starting at 7:00 pm at the home of Doris Ellenbogen.

The book to be discussed is **The Hours Count** by Jillian Cantor.

For more information and to RSVP, contact:

Mary Arpe: mcarpe@gmail.com

Marcy Allen: serenity2957@gmail.com



From the Rabbi

Rabbi Cookie Lea Olshein

The Lazy (Jewish) Days of Summer? Not here in the Palm Beaches...

The very end of the book of Psalms contains a simple verse, *Kol han'shama t'haleil Yah, Halleluyah* – let everything that breathes praise God, Halleluyah (Psalm 150:6). I think of this verse each year as summer approaches when someone innocently asks whether or not I'm looking forward to "slowing down in the summertime?"

It's hard for me not to laugh because praising God and living in a God-ly way does not stop in the summertime: we are Jewish all year-round. Here at Temple Israel, summer is the time when we not only prepare for the High Holy Days, but we also prepare our programming and special services throughout the rest of the year. This year, to encourage you to NOT take a break from your Judaism in the summertime, we've planned some great opportunities to help connect you with your Jewish soul.



For example, we are trying an experiment – we are continuing our weekly Torah study all the way through the summer this year (normally, we break for summer and pick up with the beginning of the Torah in the fall at *Simchat Torah*).

Because we usually take a break, we haven't studied much of Leviticus together (or any of Numbers or Deuteronomy), using the "deep dive" techniques we use each Saturday morning. What do we mean by this? Some weeks we discuss a lot of verses, while other weeks we might only focus on five or ten verses in the entire hour.

Also, some weeks we might focus on Chassidic teachings, while other weeks we might focus on medieval commentators or even

stories straight from the news to bring our Torah portion alive and discuss its relevance to our lives today. So, if you haven't been (or if you haven't attended lately), learning Torah really is a great way to follow Psalm 150:6, since learning is another way to praise God.

We're here from 9:30 - 10:30 am(-ish) every week!

Furthermore, this summer there will be opportunities for Jewish learning on Shabbat immediately following Torah study, with planned sessions on Jewish meditation and prayer (stay tuned for more information about these upcoming sessions). We also have another great summer Jewish film series curated by Karen Davis coming in July and August – you're going to love the diversity of the films chosen for discussion this year!

Finally, as it is summer, and many of us naturally add more outdoor time to our lives in this season, I would also encourage you to think about how nature impacts your spirituality. Do you feel more connected with God when you are outside? When you look up into the sky? When you see the stars at night? Are you better able to feel something greater than yourself when you experiencing nature? When I consider these questions, I often think about the prayer of Rabbi Nachman of Bratslav, who prayed the following:

Master of the Universe, grant me the ability to be alone; may it be my custom to go outdoors each day among the trees and grass – among all growing things – and there may I be alone, and enter into prayer, to talk with the One to whom I belong. May I express there everything in my heart, and may all the foliage of the field – all grasses, trees, and plants – awake at my coming, to send the powers of their life into the words of my prayer so that my prayer and speech are made whole through the life and spirit of all growing things, who are made as one by their transcendent Source. May I then pour out the words of my heart before your Presence like water, Adonai, and lift up my hands to You in worship, in my behalf, and that of my family, and of my community.

And I so I leave you with my personal prayer: May we each be intentional about finding the beauty of the world outside our homes, always making room to praise God along the way.

As always, my door is always open...I look forward to seeing you at our informal Summer Shabbat Services upstairs in the Media Center (or at Torah study, or at one of our other great activities). Please let me know how I can help you on your Jewish journey. *B'shir v'shalom* (in song and peace).



Save the Date!

Saturday,
November 19, 2016

TI Casino Night

Food, Drinks,
Prizes and Fun!

If you would like to join the casino event committee, please contact the Temple office: (561) 833-8421.



Holiday Boutique

Sisterhood is beginning to make plans for a fabulous Holiday Boutique and Vendor Show to be held December 1, 2016 from 11:00 am - 7:00 pm.

We need everyone to help with this event. Please contact Judy Preefer, Karen List or Lisa Rubin-Caplan if you can help by being a vendor, help secure vendors, and/or volunteer the day/evening of the sale.

Judy
jpreefer@aol.com

Karen
Karelito@aol.com

Lisa
lrubinc@aol.com



Cynn timer S. List



Lora Baum



Ad Journal Plans Underway

We are thrilled to announce that long-time members Lora Baum and Cynn timer S. List will be honored this fall in our Annual Journal and Membership directory! Their many years of service and dedication to Temple Israel and the community make them well-deserving honorees! Be on the lookout in your mail for your chance to be part of the 2016-2017 Journal; we are planning something special and different!

We would love your help and input, please contact us at (561) 616-2512 or the e-mails below to add your name to our committee (no long meetings, we promise!!!).

Thanks,

Karen and Marty List, Ad Journal co-chairs

karelito@aol.com

marty@the listcompanies.com

Member Spotlight: Cynn timer S. List and Lora Baum

Where did you grow up?

Did you have strong Jewish influences?

Lora:

I was born in Germany and moved to Brooklyn, New York with my parents when I was four-years old. We eventually settled down on a chicken farm in Vineland, New Jersey where I lived from the age of 10 until I went away to college. My folks were active in the Jewish community – my dad with our local synagogue and Israel Bonds and my mom was involved with Hadassah.

Cynn timer:

I grew up in Akron, Ohio, with an older brother and a large extended family. My parents were very caring and loving, and we had an extremely close relationship. My father was very involved with our Jewish community; he was dedicated to *Tikkun Olam*. It was very natural for me to follow his example.

How did you meet your husband?

How did you end up in Florida?

Lora:

I met Paul through business – he owned a handbag manufacturing firm and I was a buyer. After our marriage, I joined his company. In 1980 we sold the business and became snowbirds until 1985 when we moved to Florida permanently. We were happily married for 23 years.

Cynn timer:

I met Bob on a blind date here in Palm Beach when I came down on my college spring vacation to be with my parents. My folks were spending the winter in Florida due to my father's ill health. Bob and I had an instant connection and by the time I went back to school after that vacation, we knew we were going to marry each other! Bob was already living in Florida after his military service and was breaking into the budding real estate market. I certainly did not object to leaving northern Ohio for sunny, warm Florida.

How did you get involved with Temple Israel?

Lora:

We joined Temple Israel in 1988, having been members of Rodeph Shalom in Manhattan. Several years later I was asked to chair and establish a tennis tournament, the start of many years as a board member, secretary, and vice-president.

Cynn timer:

We joined Temple Israel in 1957. At that time, Temple Israel was the largest of the three synagogues in the area - the other two were Conservative and very small.

How did you meet each other?

Cynn timer and Lora:

We met on the tennis courts at The Tennis Club in the early 1980's. Although we never played as partners, we became firm and long-term friends. Our extended families became shared as well. We have been there for each other through the good times and bad.

What is one of your most profound family memories?

Lora:

My parents and I came to America in the late 1930's and sent for my paternal grandparents two years later. By the time we could afford to bring my maternal grandparents over; it was too late. They were imprisoned in a concentration camp, where they spent three years until the camp was liberated. They arrived in the United States in 1946. My grandfather's yellow Star of David is sewn onto the cover of Temple Israel's Holocaust Torah, which is displayed in our ark.

Cynn timer:

Having grown up in a very loving and close family, the birth of my great-grandson is one of the most overpowering moments in my life. With my strong sense of family history in stories going back to the 19th century, I now envision my family continuity advancing into the 22nd century. For me that is profound. What a blessing!

Contributions

(Received through May 6, 2016)

We appreciate the thoughtfulness of those who support Temple Israel by remembering and honoring their friends and loved ones through their generous contributions.

Thank you!

General Operating Fund

In honor of Ruth Abramson's special birthday from
Linda Kalnitsky

Floral Fund

In memory of Gerald Paskal from
Judy, Alan, & Jenny Shuster

In memory of Esther Elson from
Ambassador Edward E. Elson

In memory of Ruth Greenfield from
Robert Needle

In memory of Jean D. Rubin from
Lisa Rubin Caplan

In memory of David Jacobson from
Georgia & Scott Newman

In memory of Richard Rosenbloom from
Bernis Gold Rosenbloom

Mitzvah Fund

In honor of Ruth Abramson, wishing you the happiest birthday and the happiest year from Joy FeBland

Formal Jewish Education for Youth Fund

In memory of David Greenspan from
Ann & Michael Small

Music Fund

In memory of Jean Ann Kennedy from
Lisa Rubin Caplan & Irv Silver

In memory of Joann Leopold from
Lisa Rubin Caplan

In memory of Jean Ann Kennedy from
Deborah Hirsch & Hugo Ottolenghi

In memory of Jean Ann Kennedy from
Ellen Flaum

Social Action Fund

In memory of Joann Leopold from
Nancy & Stephen Schwartz

In memory of Joann Leopold from
Eunice & Jim Baros

In memory of Gene Solomon, "Genie Boy", missing you,
from your loving sister, Joy FeBland

In memory of Jean Ann Kennedy from
Lora Baum

In memory of Joann Leopold from
Lora Baum

In memory of Joann Leopold from
Ellen Flaum

In memory of Jean Ann Kennedy from
Gee Gee & Jim Eisenberg

In honor of Ruth Abramson's special birthday from
Gee Gee & Jim Eisenberg

Rabbi's Discretionary Fund

In memory of Joann Leopold from
Georgia & Scott Newman

In honor of a wonderful Passover from
Patricia Matson
Contribution from
Karl Fescenmeyer

Yarzheit Fund

In memory of...

Leopold Baum from Lora Baum

Francis H. Bogard from Marlene Ganz Bogard

Ethel Brooks from Florence Bogin

Esther Elson from Ambassador Edward E. Elson

Ruth Greenfield from Robert Needle

David R. Jacobson from Georgia & Scott Newman

Bessie Kagen from Diane & Martin Trust

Simeon Kosberg from Carol Kosberg

Gerald Paskal from Shirley Paskal

Gerald Paskal from Judy, Alan, & Jenny Shuster

Ruth Roberts from Neil Roberts

Bernice Rosenberg from Baylie & Marvin Rosenberg

Richard Rosenbloom from Bernis Gold Rosenbloom

Jean D. Rubin from Lisa Rubin Caplan

Rose Rudnick from Barbara R. Levine

Alex Schulman from Cynnie S. List

Avram Solomovitz from Giselle Solomovitz

List of Temple Israel's Special Funds

Call the Temple office at (561) 833-8421 for more information.

- ☐ Beautification Fund
- ☐ Continuing Jewish Education for Adults Fund
- ☐ Jewish Education for Youth Fund
- ☐ Judaica Fund
- ☐ Leadership Development Fund
- ☐ Library/Media Center Fund
- ☐ Mitzvah Fund
- ☐ Prayer Book/Torah Commentary Fund
- ☐ Programming Fund
- ☐ Rabbi Emeritus Continuing Education Fund
- ☐ Rabbi Howard Shapiro Youth Fund
- ☐ Rabbi's Discretionary Fund
- ☐ Social Action Fund
- ☐ Social Hall/Kitchen Fund
- ☐ Technology Fund
- ☐ Vineberg Floral Fund
- ☐ Warren Canfield Music Fund

Keepers of the Koleynu

Stan & Marcie Gorman Althof
Howard Berman
Don Carter
Joy FeBland
Mark & Elaine Feldmesser
Judy Goldblatt
Robert & Rachel Green
Barry & Nancy Horowitz
Stephen & Sherry Jacobs
Michael & Amy Jonas
Jules & Ann Lasnick
Barbara Levine

Cynnie S. List
Marty & Karen List
Allen & Zelda Mason
Pat Matson
Neal & MJ Rothschild
Alan, Judy, & Jenny Shuster
Herbert & Phyllis Siegel
Martin & Diane Trust
Ira & Jane Warshaw
Fred & Adrienne Weissman
Morris Zabarkus & Rita Holz

Our members make generous donations to Temple Israel and often ask the Temple to allocate them to two or more purposes. Not all of our accounts are held at the same bank, and it would be a great help if donations going to different banks were written on different checks (this does not pertain to credit card donations).

Payments for the following can all be on one check and will be allocated according to your instructions:

General Donations
Yarzheits
Annual Commitments

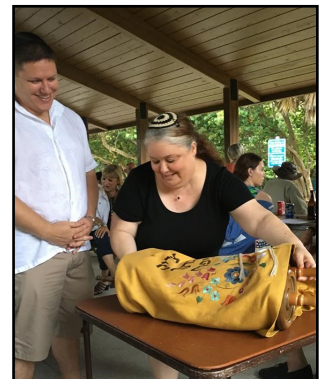
Fundraising Events
Koleynu Ads
Ad Journal Ads

High Holy Day Appeal
Class Payments
Religious School

Photo Album: Shabbat on the Beach

On Friday, May 27, Temple Israel headed to the beach for Shabbat. Although the weather prevented us from going onto the sand, we had fun under the pavilion where more than 50 congregants and guests prayed, sang and played tambourines, maracas and other hand instruments. Rabbi Olshein, Cantor Kruk, and Carol Garrett led services. It was extra special as we all watched Blake Matthews (at near right, lighting the candles with wife Melissa) complete his conversion to Judaism.

Photos by Debra Krasnow and Jennifer Baer.





Social Action Report

Roslyn Leopold | Chair

A huge thank you to Pam Wiener, Fred Weissman, and everyone who donated furniture for the refugee family project. Pam has been diligent in her commitment to get this project up and running and Fred donated his time and truck to get the furniture to the proper location.

Don't forget the food pantry as you are grocery shopping this summer. BOGO is a wonderful time to buy items such as peanut butter to donate to the pantry.

Thank you to everyone who volunteers at the food pantry.

Enjoy your summer!!



Honor a Loved One with a Leaf on TI's "Tree of Life"

Leaves are available for only \$180. Call the Temple office at (561) 833-8421 to learn more about this wonderful way to mark a special occasion in your family's life. Leave a lasting memorial for future generations!

Make Your Cemetery Arrangements Through Temple Israel

Temple Israel owns cemetery plots in our section of the Star of David Cemetery in Palm Beach Gardens. To purchase, call a Family Counselor at Star of David at (561) 627-2277 to discuss locations and other details.

We offer our plots at a special rate of only \$3,000 per plot (this is an \$800 discount per plot when you purchase through the Temple).

After speaking with the professional and choosing your plot location within the Temple Israel section, please contact our Temple Israel Administrator, Jennifer Green Baer, to make payment arrangements. Jennifer is available to assist you in any way she can. Please call her at the Temple office at (561) 833-8421 so she can help you take care of one of the best gifts you can gift your family, the gift of pre-planning.

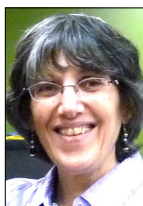


President's Circle Update

Nancy and Barry Horowitz | Chairs

The President's Circle plaque in the List Lobby has been updated with the 2016 members. In addition to the new Titanium Level, we have three new members at the Diamond Level and 10 new members at the Silver Level. Also, two former Silver members have increased their gift to the Gold Level.

We wish to thank everyone for their participation. There are still many blank tiles on the plaque and if you are interested in joining, please either contact one of us or Jennifer at the Temple office.



From the Educator

Iris Koller | Religious School Director

Summertime is "Planning for Learning" Time!

Although there may not be students coming to religious school each week throughout the summer, much is happening to ensure that the learning at Temple Israel remains vibrant and strong. The visioning, planning, organizing, and learning is in full swing! Among the projects on tap for the months ahead are:

- Continuing to share resources and activity ideas with our families, so Jewish engagement continues
- Redesigning our curriculum to actively engage our students at every age
- Clearing our classrooms of clutter and preparing them for the year ahead
- Categorizing and organizing our school resources, supplies and materials. The re-creating storage spaces to allow for easier access and use.
- Reviewing Hebrew skills with some of our students
- Developing a NEW monthly parent and me (aka baby & toddler) program and NEW Family Preschool programs
- Professional development and planning with our teachers

Multi-age classes, interactive learning and explorations, innovative scheduling, and family learning all make Temple Israel's learning for children unique in our community. Our new FREE monthly Sunday Parent & Me (aka a parent & baby/toddler play group); regularly scheduled FREE Sunday Family Pre-K Learning programs; and School Family Shabbat dinners will add to our uniqueness as a learning community that keeps families at the center.

How Can You Help?

Help us grow by sharing all we have to offer with colleagues, friends, and neighbors raising young Jewish children. Invite them to contact me or invite us to get together for coffee to chat. You can always reach me at iris@temple-israel.com or just give a call.

Like to organize? We'd welcome some volunteers this summer to help us sort and organize the many art supplies and books that have been gathered across the TI campus over many years. It will help make our classrooms more vibrant learning places to "get things out of the way," and allow us to better use all that we have! Just drop me a note at iris@temple-israel.com or call to let me know you'd like to help and when you are available.

Enjoy your summer – and "talk us up" as you do! We'll all be the better for your efforts as Temple Israel continues to grow.



Thank you to our advertisers and Koleynu Keepers!
Call the Temple office at (561) 833-8421 to reserve your space.

SHUSTER EYE

ALAN R. SHUSTER, M.D., F.A.C.S.

Diplomate, American Board of Ophthalmology
 Diseases and Surgery of the Eye

2220 SE Ocean Blvd. - Suite 101 - Stuart, Florida 34996

(772) 210-7070 (561) 425-7070
 Fax (772) 210-9080

THE GIFT OF TOUCH

Creative Massage Therapy

relax

HOWARD SOLOMON

Licensed Massage Therapist

Florida License MA 34638

561-254-9867

hoso1946@gmail.com

ILLUSTRATED
 PROPERTIES

CHRISTIE'S
 INTERNATIONAL REAL ESTATE



DAVID A. SAX
 REALTOR®

Cell: 561.262.0755 | Office: 561.626.7000
 dsax@ipre.com | www.ipre.com/davidsax

IPRE.COM

Lawrence M. Abramson
 Attorney at Law

(561) 965-3411

Fax (561) 965-0059

E-mail: LawrenceAbramson@aol.com

1860 Forest Hill Boulevard

Suite 200

West Palm Beach, FL 33406



Eisenberg & Fouts, P.A.
 Attorneys At Law

James L. Eisenberg

Suite 704, One Clearlake Centre
 250 Australian Avenue So.
 West Palm Beach, FL 33401

jim@eisenbergandfouts.com

www.eisenbergandfouts.com

Ph: 561-659-2009

Fax 561-659-2380



Palm Beach Paperworks

Invitations • Stationery
 Announcements • Holiday Cards

Nancy F. Horowitz

129 Thornton Dr. - Palm Beach Gardens, FL 33418

Tel/Fax 561-622-1522

Joanne Green, DDS
 EXPERIENCE DENTISTRY WITH A WOMAN'S TOUCH

Cosmetic and Comprehensive Restorative Dentistry

10887 N. Military Trail, Suite 6 • Palm Beach Gardens, FL 33410

Phone: 561.622.2815 • Fax: 561.622.3231

www.joannegreendds.com • documents@joannegreendds.com

Dermatology Associates, P.A. of the Palm Beaches

Howard A. Green, M.D., F.A.C.P.

120A Butler Street
 West Palm Beach, FL 33407
 (561) 659-1510
 Fax (561) 659-0495

10335 N. Military Trail
 Suite A
 Palm Beach Gardens, FL 33410
 (561) 622-6976
 Fax (561) 622-3057

Note to Our Congregants

To help with the rising costs of finance charges on credit card payments, we are now requiring a 3% convenience fee on all credit card transactions. We appreciate your cooperation and understanding as we continue to carefully monitor the financial health of Temple Israel.

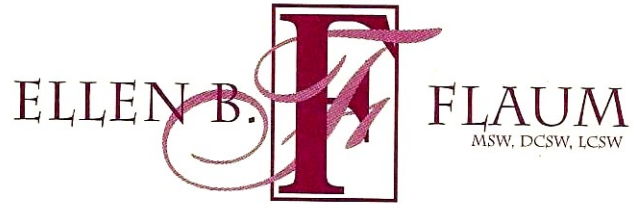


THE LIST COMPANIES

A diversified real estate organization

LISA R. CAPLAN
Realtor Associate

CELL 561-704-2789 • lisarubincaplan@aol.com
340 ROYAL POINCIANA WAY • #317 PMB 378 • PALM BEACH, FLORIDA 33480
OFFICE 561-655-7150 • FAX 561-892-0555



ELLEN B.

FLAUM
MSW, DCSW, LCSW

Individual, Marriage and Family Psychotherapy

1825 Forest Hill Boulevard, Suite 103
West Palm Beach, FL 33406

561.968.1505
By Appointment

Fax 561.968.1565
ebflaum@aol.com

Handmade necklaces, bracelets and more...

Custom orders available – what's your color, preferred length, favorite stone?



Need favors for your party? Want to match a special outfit? I can re-imagine your old beads or create something new.

Pamela Wiener/Breedlove Designs
561-588-6123
pamwienerphd@gmail.com breedlovedesigns.biz



Carol Reva Robbins-Garrett
District Leader

561.572.0316 Phone
561-827-1646 Mobile
crobbinsgarrett@primerica.com

Primerica
639 E Ocean Ave
Suite 206
Boynton Beach, FL 33435



SCHLUMPY TO SVELTE

by the New Year



Rick Luise
(561) 622-2294

Head Personal Fitness Trainer
JCC of the Palm Beaches for 20 years

Schedule a complimentary workout.

TI Clients:
Dr. Barry Horowitz, Dr. Mitchell Josephs,
Marty List, and many more!

PAIN RELIEF - STRESS RELIEF - ULTIMATE RELAXATION

Mitchell Ganz

Licensed Massage Therapist



Skillfully applied therapeutic massage and bodywork
Completely mobile service to your location
HOME - HOTEL - OFFICE - BUSINESS
561-693-8275

www.mitchellganz.com
massage@mitchellganz.com
FL License #MA49721



Log on to
Rabbi Howard
Shapiro's blog!

rabbiunplugged.wordpress.com



Implant, Cosmetic and General Dentistry



DR. MITCHELL
JOSEPHS
D.D.S., P.A.

Dental Implant Surgery
Porcelain veneers
Complex Crown &
Bridge Treatment

Digital impressions: No "goop"!
Digital low-dose X-rays & imaging
Laser non-surgical periodontal
(gum) treatment

A



NO CUT Dental Implants

No Scalpel • No Stitches
2 Visits and DONE!



888-DRTOOTH • PalmBeachDentist.com DN13228

Dental Precision and Design for 25 years...

Author of: "Ask the Dentist" column next to Dr. Oz in Sunday's
Palm Beach Post Accent section.

- On staff West Palm Hospital* (*formerly "Columbia Hospital")
- Residency at Beth Israel Medical Center and Mt. Sinai in Manhattan.
- Faculty Advisory Board McGill University Faculty of Dentistry
- TV Appearances on:



- Articles published in:

[The New York Times](http://TheNewYorkTimes.com)

[Newsweek](http://Newsweek.com)

[GLAMOUR](http://GLAMOUR.com)

[Men's Health](http://Men'sHealth.com)

[NEWBEAUTY](http://NEWBEAUTY.com)
THE BEAUTY AUTHORITY

- Host of "Tooth Talk" AM radio show on:

[1230 WBZT](http://1230WBZT.com)
THE TALK STATION



Linked in



You Tube



Follow Dr. Mitchell Josephs DDS PA

(561) 832-4675

The Palm Beach Towers • 44 Coconut Row Suite 206 & 208 • Palm Beach, FL 33480
www.palmbeachdentist.com • drjosephs@palmbeachdentist.com

What it means to be A Center of Excellence in senior care



- Services that meet all the needs of a deserving older generation
- Research, training, and best practices in clinical care
- Expertise in short-term rehabilitation
- Understanding memory loss and mitigating its effects
- 24-hour response in home health care
- Luxury and security in independent and assisted living
- Caring...for every senior we serve, every day



MorseLife
HEALTH SYSTEM

Honoring Senior Living

561-471-5111 | morselife.org

MorseLife Services | Short-Term Rehabilitation | Long-Term Care
Independent & Assisted Living | Memory Care Assisted Living | Home Health Care
Care Management | Aphasia Therapy | Meals-on-Wheels
Honors | PACE | MorseLife Foundation

Marilyn & Stanley M. Katz Seniors Campus

4847 Fred Gladstone Drive, West Palm Beach, FL

OR CURRENT RESIDENT

Celebrations

Birthdays

June 1

Marc Levinson
Jessica Wacks

June 2

Emily Arron
Amy Devore
Ruth Salkin

June 3

Jared Maltz
Helene Rivlin

June 4

Judy Devore
Steven Gross

June 5

Blake Matthews
Anne Tanen

June 6

William Petroff

June 8

Bernis Rosenbloom
Ruby Small

June 9

Trudy Livingstone
Howard Solomon
Emma Strauss

June 10

Michael Botnick
Jennifer Strauss

June 11

Aiden Conde

June 12

Jim Baros
Rachel Kaslow
Robert Newman

June 13

Allison Rothschild
Rabbi Martin Zion

June 14

Janine Berey

June 18

Stephanie Meehan

June 19

Marcia Fligman

June 21

Alan Shuster

June 25

Rhoda Kleid
Jennifer Kronick
Alexis Weissman

June 26

Joshua Leibowitz
Terry Resk

June 27

Robert Green
Ron Levinson
John Quinto

June 28

Rita Menitoff

June 29

Sherry Jacobs

July 1

Dana Bronstien
Toni Darwish

July 3

Rabbi Cookie Olshein

July 5

Lauren Clifton
Jack Krauser

July 6

Barrett Smith

July 7

Diane Shapiro
Michael Small

July 8

Jack Ablin

July 10

David Sommer

July 12

Keith Braun
Garrett Frederiksen
Rhonda Gordon
Marilyn Lassen

July 13

Jeffrey Gingold

July 14

Michael Gelfand
Lily Tysinger

July 15

Holly Fisher
Mark Simkowitz
Diane Steiner

July 16

Adrian Sandoval
Richard Yosinoff

July 17

Alisa Maltz

July 19

Michele Matias

July 21

Marcy Goldblatt-Greiter
Traci Pincourt-Braun
Diego Urena

July 22

Joanne Green

July 23

Howard Kaslow

July 24

Judy Leibovit

July 27

Lora Baum

July 28

Mackenzie Raifman
Danielle Silver
Jacquelyn Silver

July 31

Naomi Braun



Wedding Anniversaries

June 2

Ed & Deanna Roos

June 3

Chris & Dawn Fox

June 10

Dick & Rhona Shugarman

June 11

Sandy & Jill Sirulnick

June 13

James & Katherine Bronstien

June 14

Bob & Liz Green

June 15

Steve & Mary Ann Ehrlich

June 18

Rabbi Paul & Rita Menitoff

June 21

Charlie & Valerie Eaton
Michael & Miki Leibowitz
Morris Zabarkus & Rita Holz

June 22

Michael Gelfand & Mary Arpe
Howard & Joanne Green
Conrad & Iris Koller

June 23

Hugo Ottolenghi & Deborah Hirsch

June 24

Gene & Judy Devore
Peter & Susan Hut

June 25

Rabbi Howard & Eileen Shapiro

July 1

Ron & Jacki Browne

July 20

Jules & Ann Lasnick

July 23

Mark & Tracy Simkowitz

